

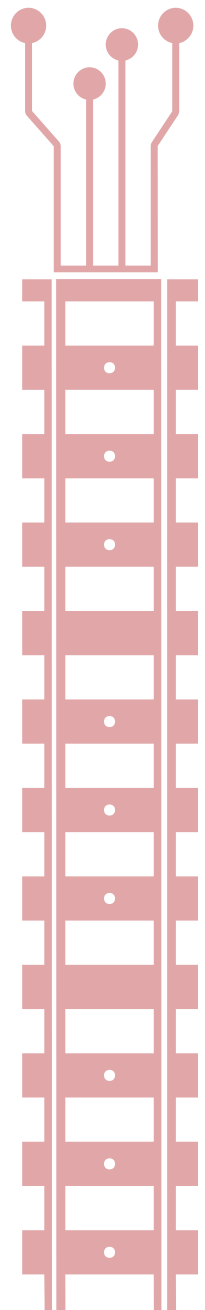
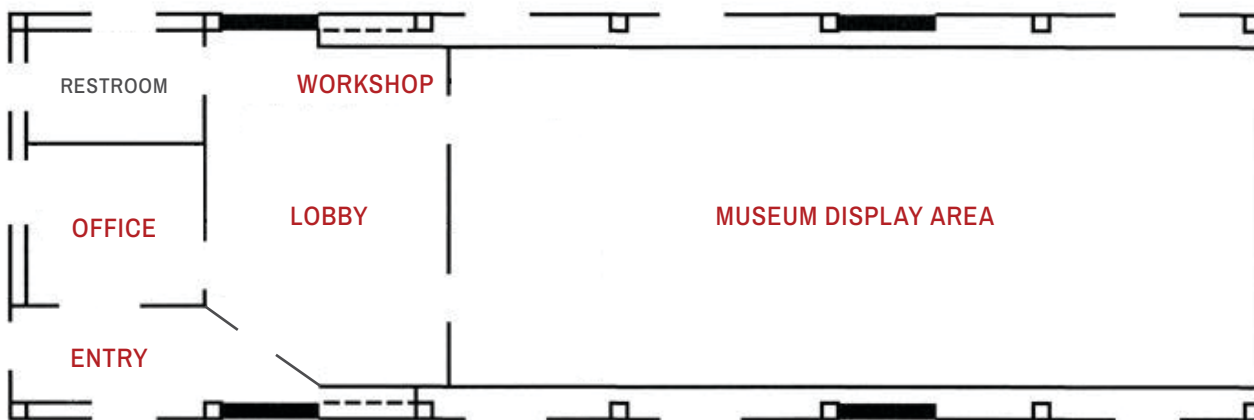


ALL ABOARD!

—THE CAMPAIGN FOR—
LAKES REGION MODEL RAILROAD MUSEUM
NAMING
OPPORTUNITIES

We are grateful for all contributions to the **All Aboard! The Campaign for the Lakes Region Model Railroad Museum**. Every donor will be recognized unless anonymity is requested.

A naming opportunity can be reserved at the time a pledge card or letter of intent is signed. Once the gift or pledge payments have been paid in full, a plaque recognizing the donor(s) will be placed on or in the space selected or reserved by the donor. We will honor naming opportunity requests in the order received and notify a donor if their choice is not available.



EXTERIOR AND DONATIONS

EXHIBIT HALL (exterior signage)	\$1,200,000
RAMP ACCESS	\$100,000

INTERIOR AND DONATIONS

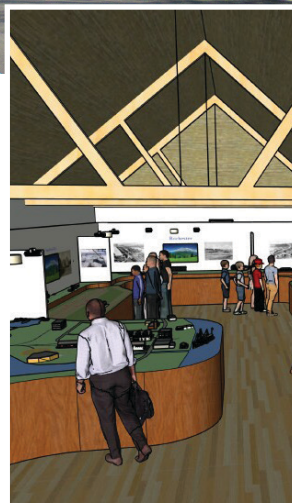
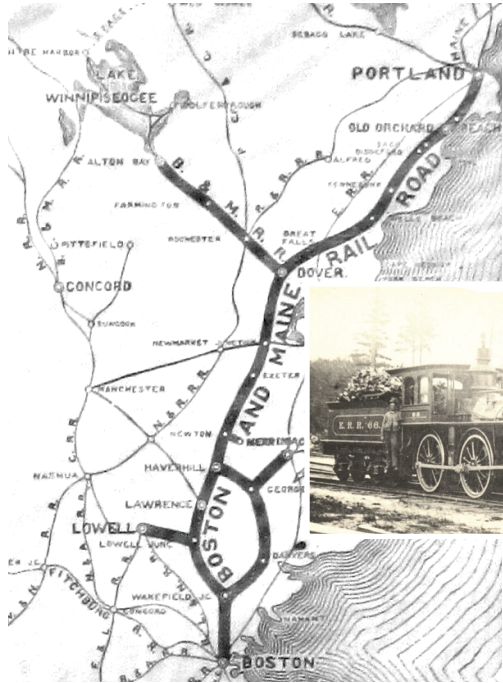
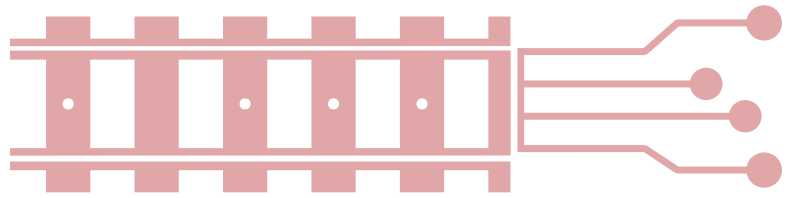
THE MUSEUM ROOM	\$250,000
HISTORIC EXPLORATION LEVEL (S SCALE)	\$200,000
Wolfeboro	\$50,000
Towns (5-8)	\$25,000 EACH
LOBBY	\$150,000
ENTRY WAY	\$100,000
WORKSHOP	\$50,000
OFFICE	\$35,000
MEZZANINE LEVEL (O OR G SCALE)	
Wolfeboro Branch Stations (12)	\$15,000 EACH



ALL ABOARD!

—THE CAMPAIGN FOR—

LAKES REGION MODEL RAILROAD MUSEUM



- 1800
- **July 1, 1868**
The Wolfeboro Railroad is incorporated
- **November 1871**
Railroad breaks ground near Mast Landing
- **January 6, 1872**
Eastern Railroad signs lease to operate the Wolfeboro line. (The Freight House is part of this system.)
- 1900
- **June 15, 1986**
Last train runs on the Wolfeboro line
- **2016**
The Town of Wolfeboro purchases the Freight House
- **2017**
LRMRM forms as a 501(c)(3) not-for-profit
- **2021**
Freight House added to the NH State Register of Historic Places.
- **2022**
\$292,000 raised and Restoration and Preservation of Freight House (Phase I of campaign) completed
- **2023**
\$259,000 raised and Phase II: Infrastructure completed
- **2024-2025**
\$573,000 left to raise for completion of Museum

